



HISTORY OF MIZUNO

The difference between something good and something great is attention to detail. Mizuno not only supports sporting activities by offering better sporting goods but also develops products and services that make the most of the value of sports and actively spread that in daily life.

1900

2020



1910

Mizuno shop begins to manufacture baseballs and gloves.

1921

Mizuno starts making sweaters for the colleges and baseball league in Japan.



1933

Mizuno first Japanese manufactured golf clubs.



1938

Mizuno established R&D department. The worlds first sports innovation centre.

1972

Supply sporting goods for the Japanese delegation to the Sapporo Olympic Games.

1982

Runbird athletics shoe goes on sale.



1991

New world record set for the 100m dash in Mizuno footwear.

1994

Innovation of Mizuno's climate control technology Breath Thermo.



2016

Mizuno sign with British Rowing as their technical apparel partner.



2018

Chambéry Handball Team partner with Mizuno for teamwear apparel.

BESPOKE SUBLIMATION

Sublimation is a manufacturing process that allows for limitless design possibilities. Mizuno predominately uses sublimation for on field/court playing kit. The process allows for club crest, sponsor logos, names and numbers to be embellished into the garment for no additional cost.

BESPOKE CUT & SEWN

The term 'Cut & Sewn' is when pre-coloured fabrics are cut to shape and sewn together to create a new bespoke garment. There is still a wide range of colours to select from and logo, names and number can be applied to garments using either an embroidery or print method.



POPLAR & DISTRICT ROWING CLUB

ROWING RANGE

17/11/2020

- TUSCAN SUN
- BLACK
- WHITE

K2EA7A56 / K2EA7C56 SOHEI ROWING ZEPHYR SL171120SP01



K2EA7A53 / K2EA7C53 SOHEI ROWING FLEECE SL171120SP03



K2EB6A73 / K2EB6C73 YAMABUSHI SUB ROWING LEGGING SL171120SP04





POPLAR & DISTRICT ROWING CLUB

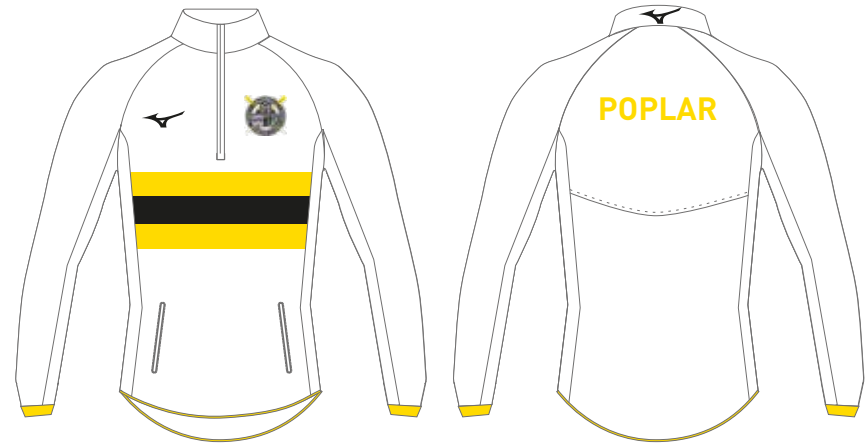
ROWING RANGE

17/11/2020

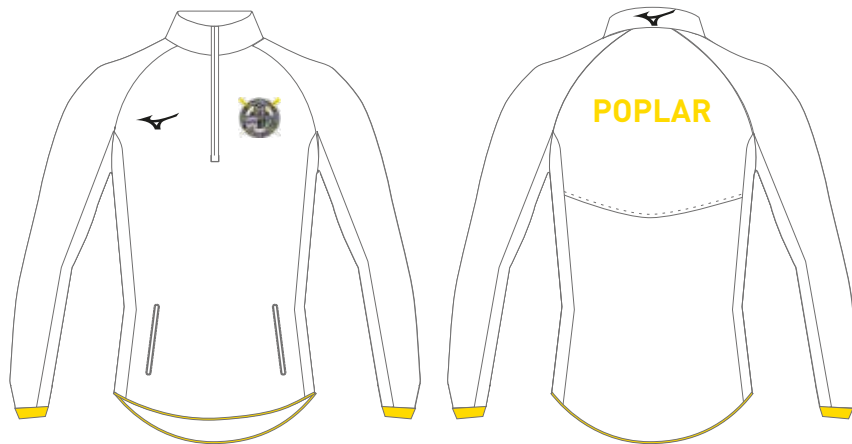
-  TUSCAN SUN
-  BLACK
-  WHITE

K2EE7A54 / K2EE7C54 SOHEI ROWING SPLASH JACKET

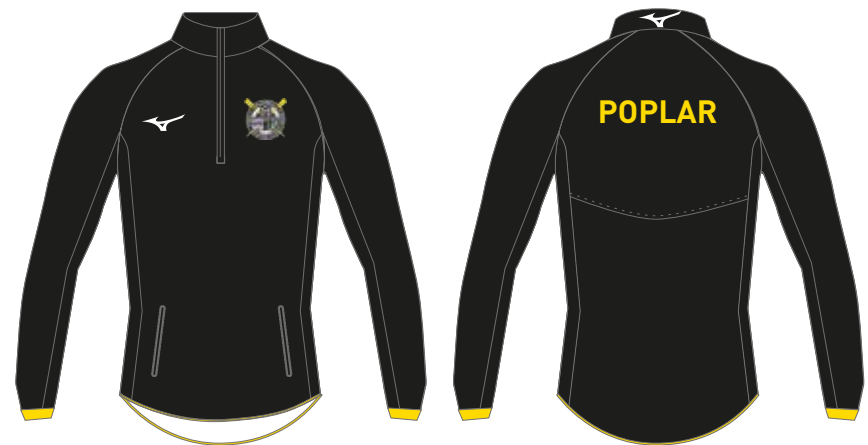
SL171120SP11



SL171120SP12



SL171120SP17





POPLAR & DISTRICT ROWING CLUB

ROWING RANGE

17/11/2020

- TUSCAN SUN
- BLACK
- WHITE

K2EE7A52 / K2EE7C52 SOHEI ROWING GILET SL171120SP05



SL171120SP07



SL171120SP18





POPLAR & DISTRICT ROWING CLUB

ROWING RANGE

17/11/2020

-  TUSCAN SUN
-  BLACK
-  WHITE

K2EG4A05 YAMABUSHI ROWING SUIT ALPHA M SL171120SP08





POPLAR & DISTRICT ROWING CLUB

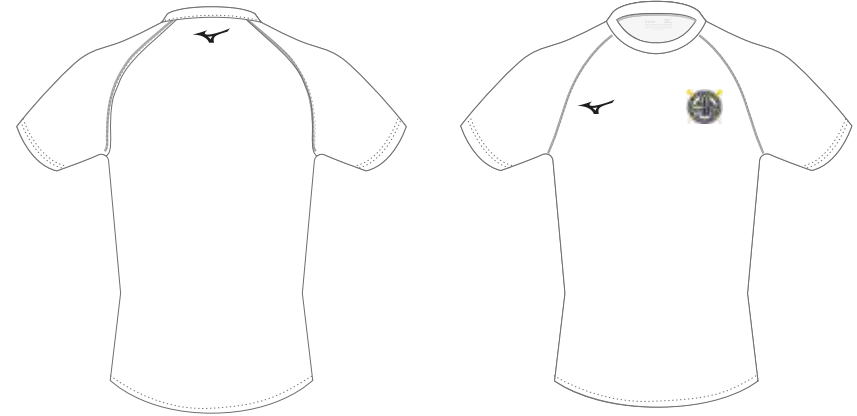
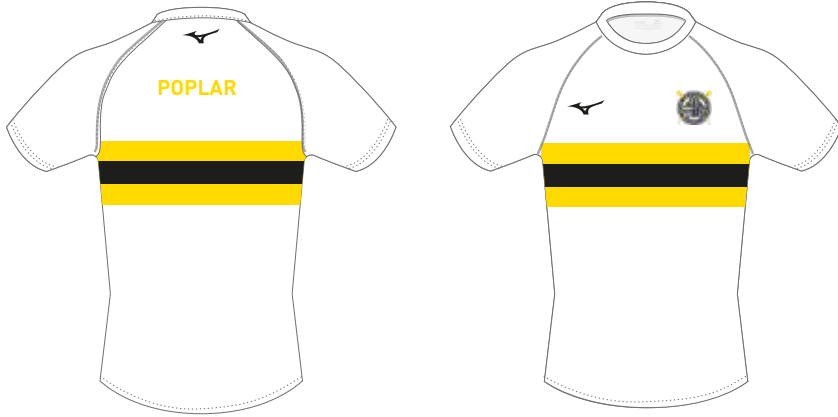
ROWING RANGE

17/11/2020

- TUSCAN SUN
- BLACK
- WHITE

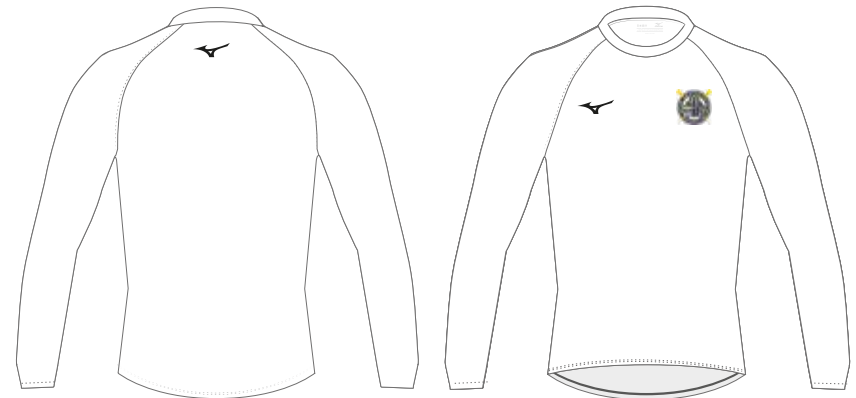
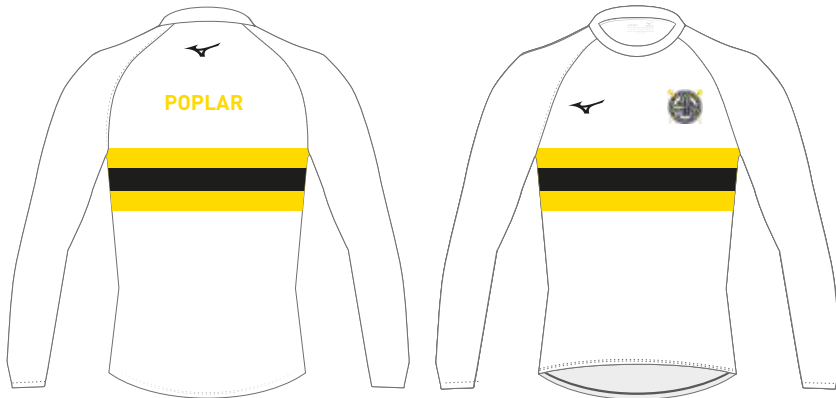
K2EA7A51 / K2EA7C51 YAMABUSHI S/S BASELAYER TOP SL171120SP13

SL171120SP14



K2EA7A52 / K2EA7C52 YAMABUSHI L/S BASELAYER TOP SL171120SP15

SL171120SP16



POPLAR & DISTRICT ROWING CLUB

INLINE RANGE

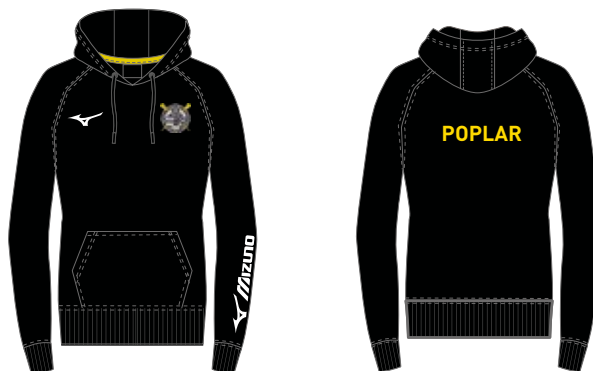
17/11/2020

- TUSCAN SUN
- BLACK
- WHITE

SHIZOUKA POLO



MIZUNO TERRY HOODIE



MEDIUM HOLDALL



JINGASA BOBBLE HAT



DRYLITE VISOR



DRYLITE CAP



BACK PACK






POPLAR & DISTRICT ROWING CLUB

LOGOS

17/11/2020

	COLORS ***
	POSITION *** SUBLIMATED

	COLORS ***
	POSITION ***

	COLORS ***
	POSITION ***

	COLORS ***
	POSITION ***

	COLORS ***
	POSITION ***

	COLORS ***
	POSITION ***

*Logo needs to be redrawn before production